

Cold Weather Oil Change: (Model 10 or 11)

In order to obtain better booming performance at low temperatures below 0°F (-18°C), customers occasionally drain our hydraulic oil and replace with an Automatic Transmission Fluid (see list of suitable ATF below).

Pennzoil Dex/Merc ATF	FANFRO ATF III
Fuchs Titan ATF 3353	Europe Shell ATF III
Valvoline Dex/Merc ATF	Liqui Moly ATF III
Triax Multipurpose ATF	Coastal Dex/Merc
Amalie DXIII-H/M ATF	ACDelco ATF Type III
Kendall Classic ATF	ELF ELFMATIC MV
Mobil ATF Dexron III	Miles ATF Dexron III
Gazpromneft ATF DX III	MANNOL Dexron III
Motorex Synthetic ATF3	Mobil 1 ATF Synthetic
Castrol Transmax Dex/Merc	
Valvoline MaxLife Full Synthetic ATF	
CAM2 Multi-vehicle Synthetic Blend ATF	
Motul Dexron III Technosynthese	

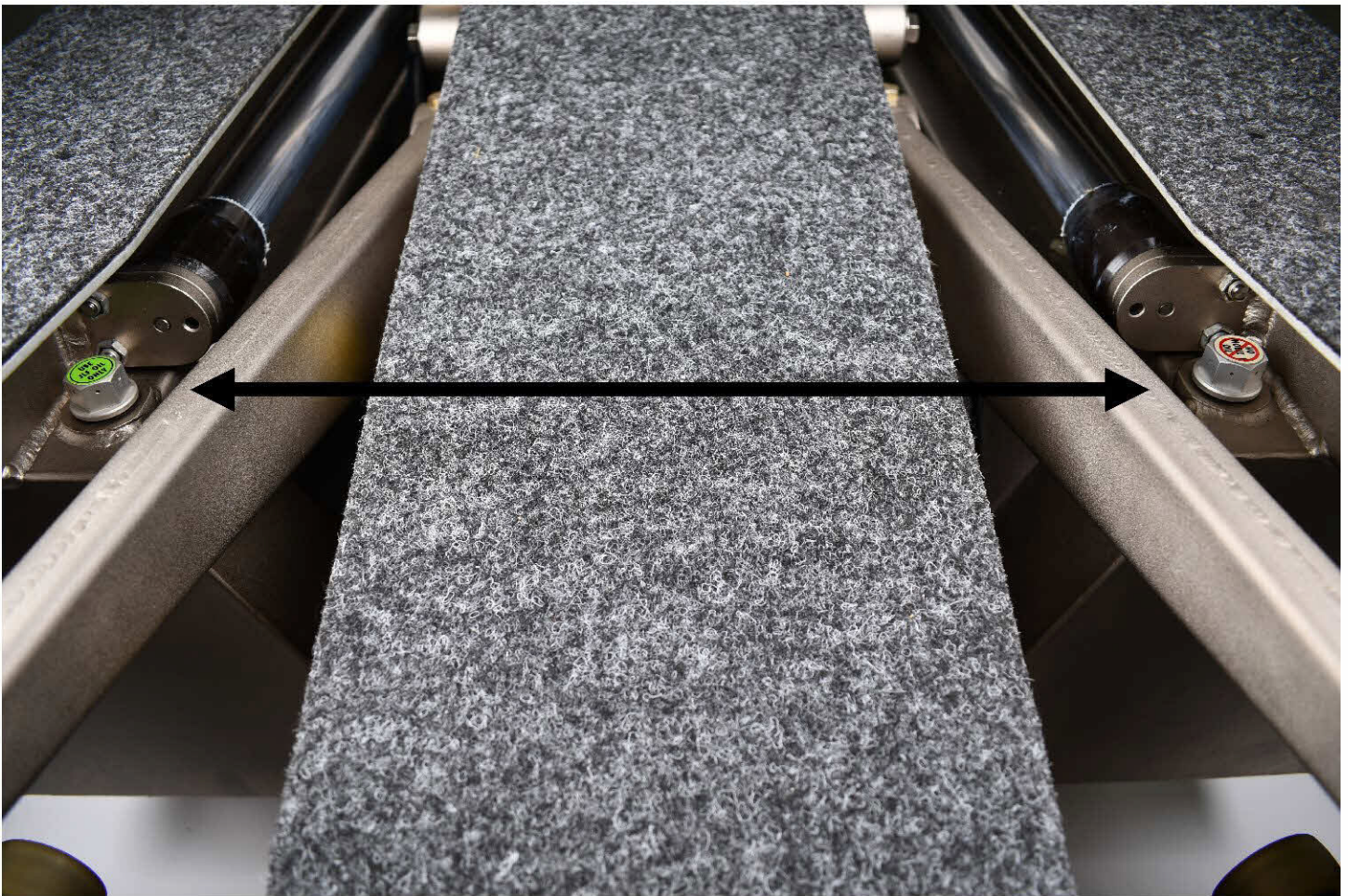
This is best done at the rental company by a J.L.Fisher trained mechanic. However, if it is necessary to change oil on location, follow this procedure.

TOOLS *required:*

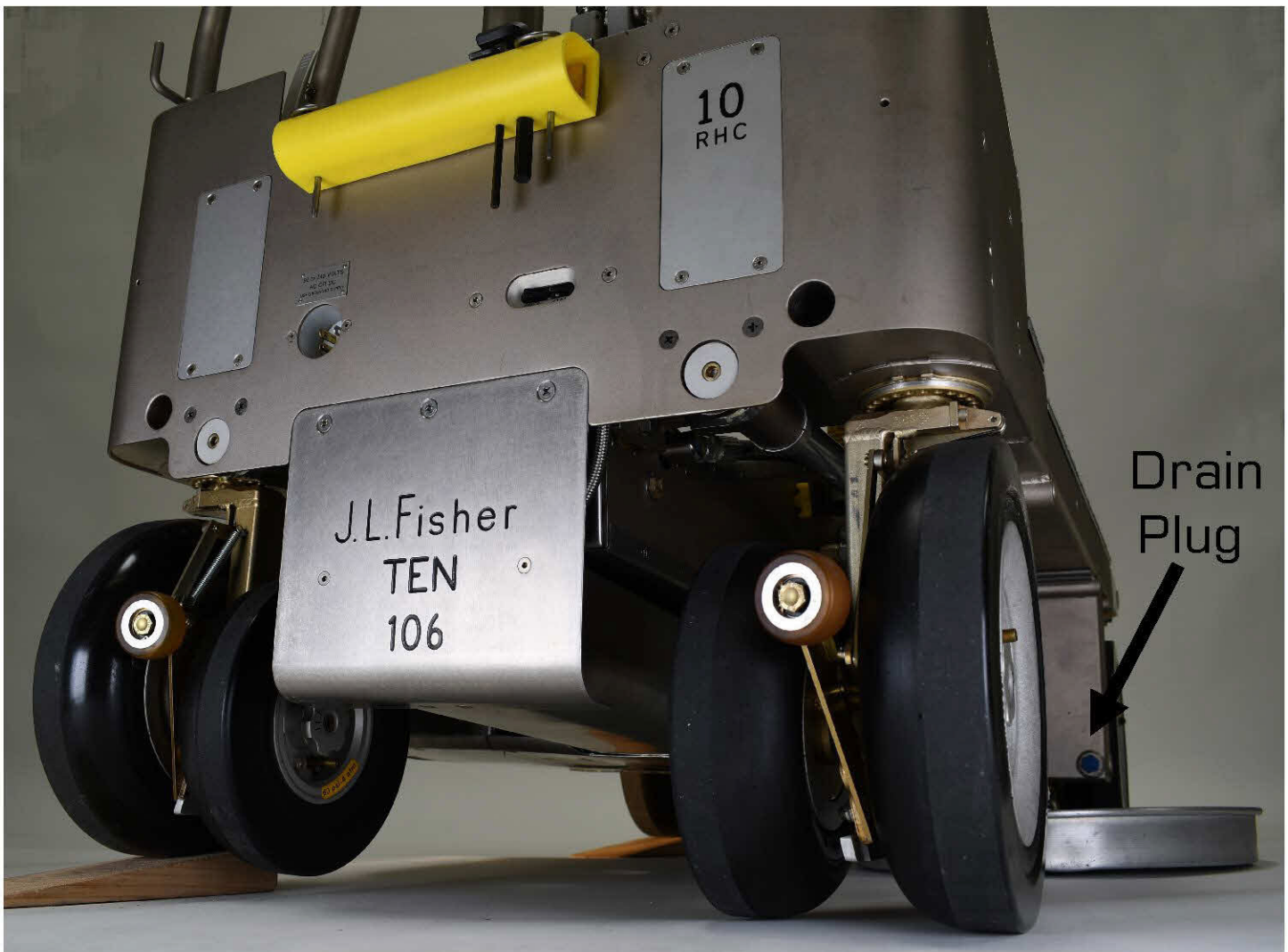
- 3 qt/l ATF from list (or equivalent) for 11 Dolly
Actual amount approximate-use dipstick-see pg. 4
- 5 qt/l ATF from list (or equivalent) for 10 Dolly
Actual amount approximate-use dipstick-see pg. 4
- 3/4" Box/Open End Wrench (oil caps)
- 1 1/16" Box/Open End Wrench (10 dolly drain plug)
- 1/4" Hex Key (11 dolly drain plug)
- 6 qt/l Drain Pan
- Funnel (Must Fit 9/16" / 14mm hole)
- Pencil
- Towels/Rags
- Tape
- Tape Measure/Ruler
- Track Wedges (2ea)

To **CHANGE** dolly oil to ATF :

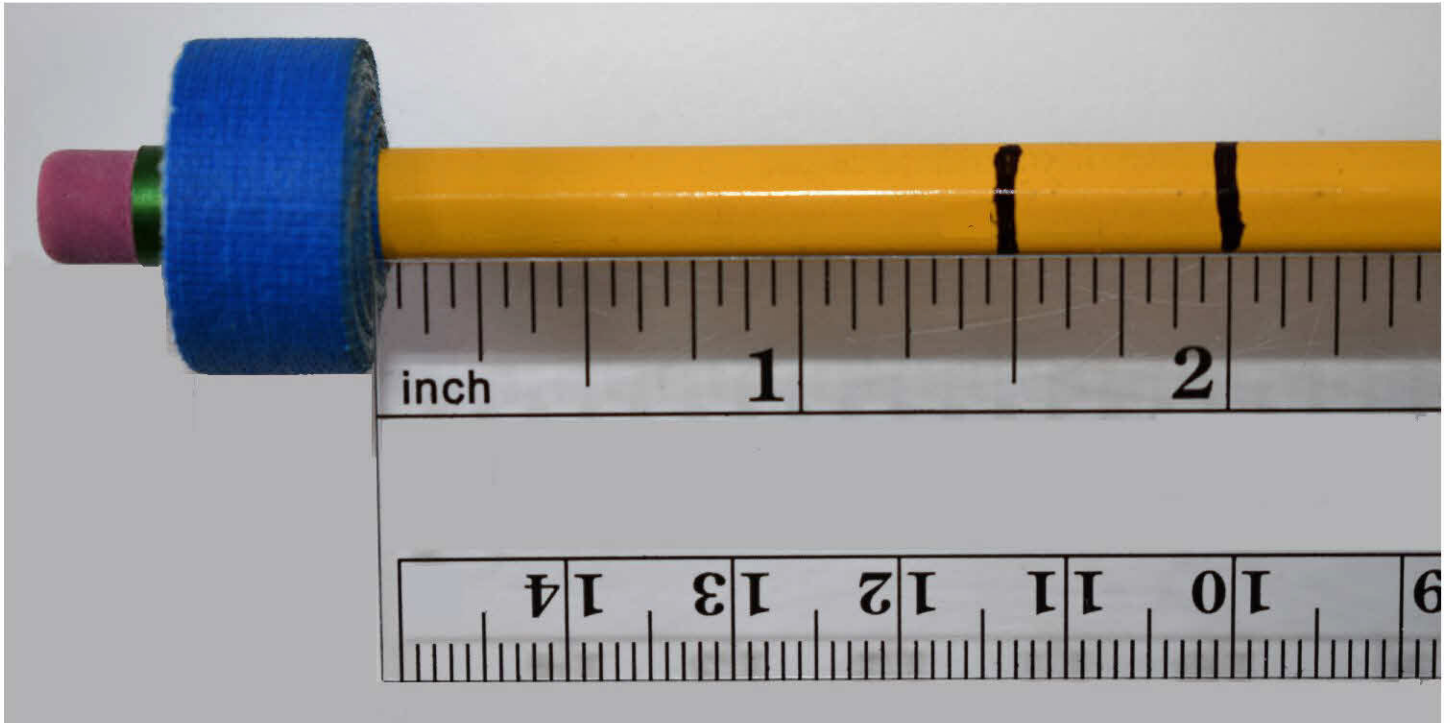
- Place dolly on a clean, dry level surface.
- ZERO OUT THE GAUGE. Run the beam up and down until the beam will not go up anymore.
- Return beam down- resting on oil tank.
- Remove both oil caps from the tank on the dolly. Place these in a clean safe area.



- Place track wedges under the left forward and rear wheels-pushing the dolly up onto them and applying the brake.



- Place a drain pan (minimum 6qt/l) under the right side and remove the drain plug.
- When drained, reinstall drain plug and remove dolly from wedges.
- Save fluid for future use or dispose of responsibly.



- Using a pencil as a measuring stick, on one end- wrap a ball of tape large enough not to fall through tank opening. Measure and mark pencil from tape at a length of:

1 ½"-2" (4-5cm) For 10 Dolly

2"-2 ½" (5-6cm) For 11 Dolly

- Lower pencil into one tank cap hole and a funnel into the other.

- Slowly begin to pour ATF into the funnel- stopping incrementally to observe tank level on dipstick. Volume of oil needed may be less than volume stated under **Tools** list.
- When the oil reaches between the two marks (minimum and maximum) on the pencil, remove the funnel and pencil- reinstalling both oil caps finger tight.
- Dolly is ready for use.